

LESSON 3

Printing a Presentation

After completing this lesson, you will be able to:

- *Open an existing presentation.*
- *Add a header and a footer.*
- *Preview a presentation.*
- *Print a presentation.*

Microsoft PowerPoint gives you flexibility for printing the slides of a presentation and any supplements. For example, you can add headers and footers, preview your presentation in grayscale or black and white to see how color slides will look after printing, and print presentation slides, speaker notes, audience handouts, and outlines. You can easily customize the printing process by selecting the paper size, page orientation, print range, and printer type to meet your needs. When you are ready to print, you can preview your presentation on the screen to make sure it appears the way you want.

As the vice president of sales for Contoso, Ltd, you need to develop presentations for a new employee training program. In the previous lesson, you created a presentation for the first training session, “Recruiting New Clients,” and now you want to open and print the presentation and accompanying speaker notes pages.

In this lesson, you will learn how to open an existing presentation, add a header and a footer, preview slides, and print a presentation.

To complete the procedures in this lesson, you will need to use a file named 03 PPT Lesson in the Lesson03 folder in the Presentation Fundamentals Practice folder that is located on your hard disk.

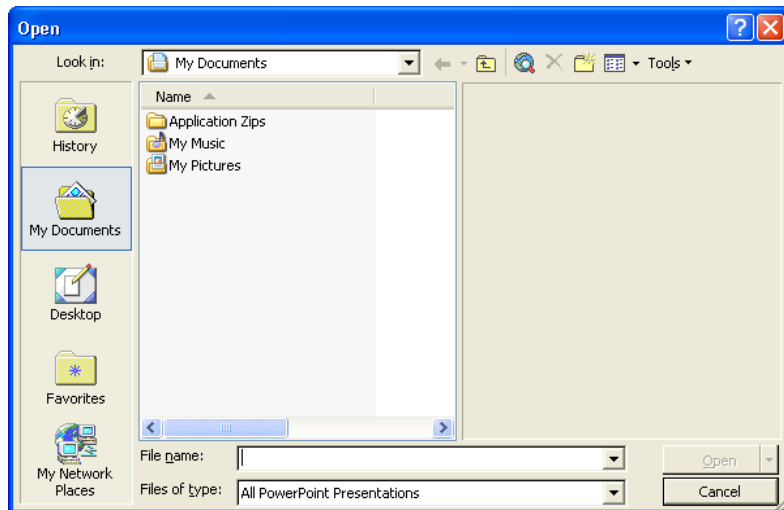
Opening an Existing Presentation

You can open an existing presentation—for example, one that you or a coworker has already created—and work on it in the same way that you would a new presentation. To open an existing presentation, you must first identify the presentation and its location.

In this exercise, you open an existing presentation and then save the presentation with a new name.

- 1 If you quit PowerPoint at the end of the last lesson, restart PowerPoint now.
- 2 On the View menu, click Task Pane, if necessary, to display the New Presentation task pane.
- 3 In the New Presentation task pane, under Open a presentation, click More presentations, or on the Standard toolbar click the Open button.

PowerPoint displays the Open dialog box, which is where you specify the name and location of the presentation you want to open.

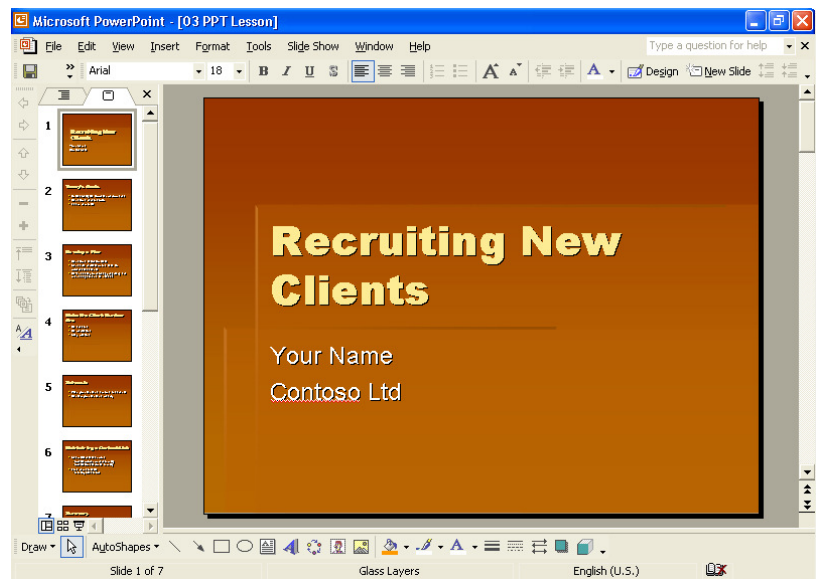


- 4 In the Look in box, verify that your hard disk is selected.
- 5 In the list of file and folder names, double-click the Unlimited Potential folder to open it.
- 6 Double click the Presentation Fundamentals Practice folder to open it.
- 7 In the list of file and folder names, double-click the Lesson03 folder, and then click 03 PPT Lesson, if it is not already selected.
- 8 Click Open.

The Open button down arrow in the Open dialog box provides additional ways to open a file.

PowerPoint displays the presentation 03 PPT Lesson in Normal view.

Your presentation window should look like the following illustration:



- 9 On the File menu, click Save As.
The Save As dialog box opens. Verify that the Presentation Fundamentals Practice folder appears in the Save in box.
- 10 In the File name box, type **Contoso Recruiting Pres 03** and then click Save.
PowerPoint saves the presentation, and the title bar changes to the new name.

Searching for a Presentation

If you can't remember the name of a presentation file but you know part of the name or some of its contents, you can search for the presentation that contains part of the file name or specific words in the file by using the Basic Search task pane. For more advanced searches, you can use properties, conditions, and values in the Advanced Search task pane to make the search criteria more specific. The Advanced Search task pane contains a set of properties—such as file name, text, creation date, last modified, and number of slides—and associated conditions—such as equal to, on or before, more than, or yes/no—to help you find a specific file or set of files. For example, you can type the search criteria “file name includes training” where *file name* is the property, *includes* is the condition, and *training* is the value, to find all files that contain the word *training*. If the fast searching option is installed on your computer, PowerPoint can search through files and organize information for faster retrieval. If fast searching is not installed, you can click Install in the Basic Search task pane to install it.

To search for a presentation using the Basic Search task pane:

- 1 On the Standard toolbar, click the Search button.
The Basic Search task pane appears. If the Advanced Search task pane appears, click Basic Search at the bottom of the task pane.
- 2 In the Search text box, type the text to search for the files that you want to find.
- 3 Click the Search in down arrow, and then select the check box locations to look for presentation files. Or, select the Everywhere check box to search all files on your computer.
- 4 Click the Results should be down arrow, and then select the check box for the types of items to find, or select the Anything check box to find all types of files.
- 5 Click Advanced Search at the bottom of the Basic Search task pane to display the Advanced Search task pane.
- 6 Click the Property down arrow.
The Property box displays the properties in the currently open presentation.

- 7 Choose a property from the list, or type the property name that you are searching for.
- 8 In the Condition box, choose a condition from the list, or type in a condition.
- 9 In the Value box, type the value to associate with the condition.
- 10 If previous search criteria exist, click **And** to add criteria that must be true in addition to previous criteria, or click **Or** to add a criterion that is sufficient regardless of previous criteria.
- 11 Click **Add** to add the search criterion.
- 12 Click **Search**.

PowerPoint searches through the selected files in the indicated folders. When the search is complete, PowerPoint displays the files that meet the search criterion in the Search Results task pane. You can double-click files in the Search Results task pane to open them.

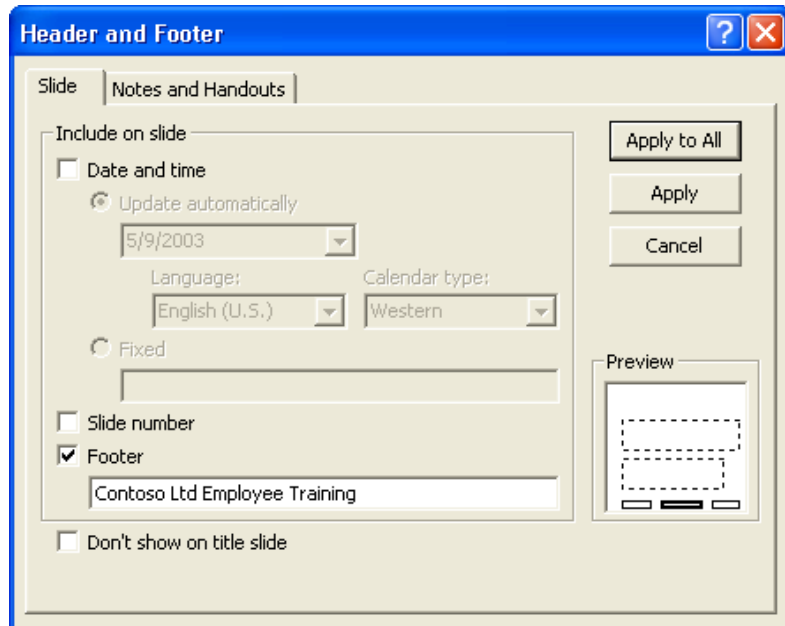
Adding a Header and a Footer

Before you print your work, you can add a header or a footer, which will appear on every slide, handout, or notes page. Headers and footers contain useful information about the presentation, such as the author or company name, the date and time, and the page or slide number. Because PowerPoint lets you add more than one header and footer to a presentation, you can have different headers and footers for slides and for notes and handouts. You can quickly and easily add a header and a footer to your slides, audience handouts, outlines, and speaker notes with the Header and Footer command on the View menu. Header and footer information appears on the master slide.

In this exercise, you add a header and a footer to a presentation.

- 1 On the View menu, click **Header and Footer**.
The Header and Footer dialog box appears with the Slide tab on top.
- 2 Select the Footer check box, and then type **Employee Training** to the right of the phrase *Contoso, Ltd.*

In the Preview box, a black rectangle highlights the placement of the footer on the slides. Your dialog box should look like the following illustration:



- 3 Click the Notes and Handouts tab.
The header and footer settings for the notes and handout pages appear. All four check boxes are selected.
- 4 Click the Header box, and then type **Recruiting New Clients**.
- 5 Click the Footer box, and then type **Contoso, Ltd**.
- 6 Clear the Date and Time check box.
PowerPoint includes the header, footer, and page number on each notes or handout page you print.
- 7 Click Apply to All.
The header and footer information is applied to the slides, notes pages, and handouts pages. Notice that the current slide appears with the slide footer in place.

Previewing a Presentation

Print preview allows you to see how your presentation will look before you print it. While in print preview, you have the option of switching between various views, such as notes, slides, outlines, and handouts, and changing the print orientation. If you are using a black and white printer to print a color presentation, you need to verify that the printed presentation will be legible. For example, dark red text against a shaded background shows up well in color, but when seen in black and white or shades of gray, the text tends to be indistinguishable from the background. To prevent this problem, you can

preview your color slides in pure black and white or grayscale in print preview to see how they will look when you print them.

Pure Black and White displays colors in black and white, while **Grayscale** displays colors in shades of gray. If you want to make changes to your slides while viewing them in black and white, you can change the color setting to black and white in Normal view.

In this exercise, you preview your presentation handouts, view your slides in Grayscale and Pure Black and White, and then change the way the slides looks in black and white.

- 1 On the Standard toolbar, click the Print Preview button.
The screen switches to print preview and shows your presentation in the currently selected settings.



important

If you are printing to a grayscale printer, your slides are shown in grayscale using print preview.

- 2 On the Print Preview toolbar, click the Print What down arrow, and then click Handouts (2 slides per page).
The preview screen displays your presentation in handout format with two slides per page.
- 3 On the Print Preview toolbar, click the Options down arrow, point to Color/Grayscale, and then click Grayscale.
The preview screen displays your presentation in a shaded grayscale.
- 4 On the Print Preview toolbar, click the Next Page button.

The preview screen displays the next handout page.

- 5 Position the pointer (which changes to a magnifying glass with a plus sign) in the preview area, and then click the center of the top slide.

The preview screen magnifies to display a close-up view of the slide.

- 6 Position the pointer (which changes to a magnifying glass with a minus sign) in the preview area, and then click the center of the slide.

The preview screen zooms out to display the original view of the slide.

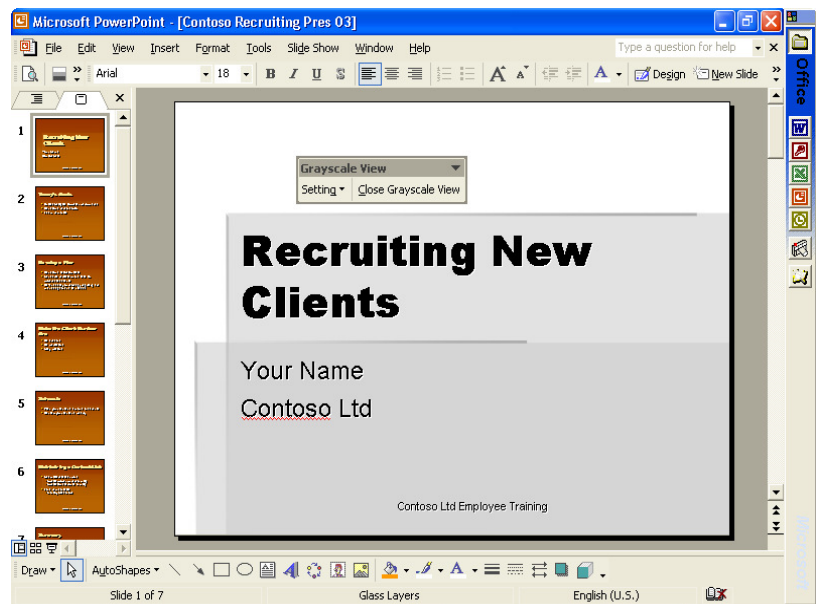
- 7 On the Print Preview toolbar, click the Previous Page button.
The preview screen displays the previous handout page.

- 8 On the Print Preview toolbar, click the Close Preview button.
The preview screen closes, and your slide appears in the previous view.

- 9 Click the Normal View button, if necessary, and then click the Slides tab to display slide miniatures in the Outline/Slides pane.

- 10 On the Standard toolbar, click the Color/Grayscale button, and then click Grayscale.

The slide switches from color to grayscale and the Grayscale View toolbar opens. You can still view the slide miniatures in color on the Slides tab, making it easier to compare the color slides with the black and white slides.



- 11 On the Standard toolbar, click the Color/Grayscale button and then click Pure Black and White.

The slide displays in pure black and white.

- 12 On the Grayscale View toolbar, click the Setting button, and then click Black with Grayscale Fill.
The slide background changes from white to gray.
- 13 On the Grayscale View toolbar, click the Setting button, and then click White.
The slide background is white again.
- 14 On the Grayscale View toolbar, click the Close Black and White View button.
The slide switches back to color.

Printing a Presentation

You can print your PowerPoint presentation in several ways: as slides, speaker notes, audience handouts, or an outline. PowerPoint makes it easy to print your presentation. It detects the type of printer that you chose—either color or black and white—and prints the appropriate version of the presentation. For example, if you select a black and white printer, your presentation will be set to print in shades of gray (grayscale).

If you are working with a professional printer to print your slides, you will need to print your slides to a file instead of a printer. To print your slides to a file, select the Print to file check box in the Printer section.

PowerPoint prints slides and supplements based on the settings in the Print dialog box. In the Print dialog box, you can select a printer or the option to print to a file. You set the print range, which defines which slides to print. You can choose to print multiple copies of a presentation, and if you do print more than one copy of each slide, you can choose to collate the presentation as you print. When you collate the presentation, PowerPoint prints a complete copy before printing the next copy. The Print dialog box also contains a Preview button that takes you to the Print Preview window, allowing you to preview any changes you might have made.

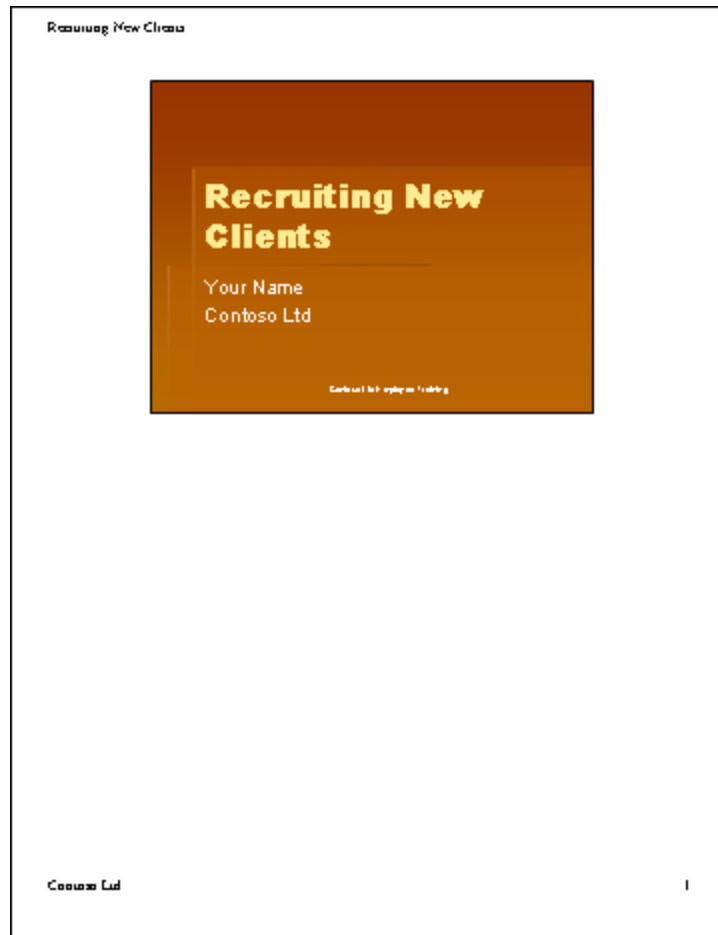
By clicking the Print what down arrow in the Print dialog box, you can choose to print a presentation as one of four output types:

- **Slides** Prints slides as they appear on the screen, one per page. You can print a slide as an overhead transparency in the same way that you print any other slide, except you put transparency film in the printer instead of paper.
- **Handouts** Prints one, two, three, four, six, or nine slides per page.
- **Notes Pages** Prints each slide with the speaker notes under it.
- **Outline View** Prints an outline with formatting according to the current view setting. What you see in the Outline tab is what you get on the printout.

An example of each printing type is shown below.



Slide (landscape)



Notes page

Recruiting New Clients

Recruiting New Clients

Your Name _____
Contact Us _____

NAME: _____

Today's Goals

- Build strategies for better performance
- Develop a personal plan
- Learn new skills

NAME: _____

Develop a Plan

- Develop a list of contacts
- Schedule periodic phone calls to prospective clients
- Re-evaluate your strategy regularly and make adjustments as needed

NAME: _____

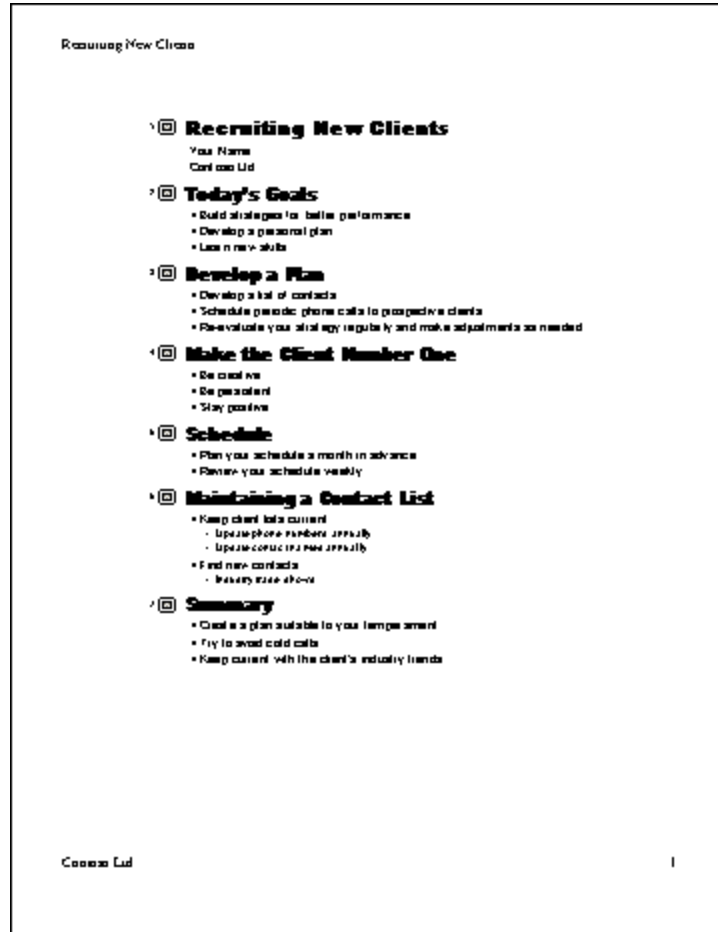
Make the Client Number One

- Be creative
- Be persistent
- Stay positive

NAME: _____

Course Ltd 1

Handout page



Outline page

By using the Color/Grayscale down arrow in the Print dialog box, you can choose to print a presentation as one of three color options:

- **Color** Use this option to print a presentation in color on a color printer. If you select a black and white printer with this option, the presentation prints in grayscale.
- **Grayscale** Use this option to print a presentation in grayscale on a color or black and white printer.
- **Pure Black and White** Use this option to print a presentation in only black and white with no gray on a color or black and white printer.

Finally, at the bottom of the Print dialog box, you can select from the following print options to enhance a printout:

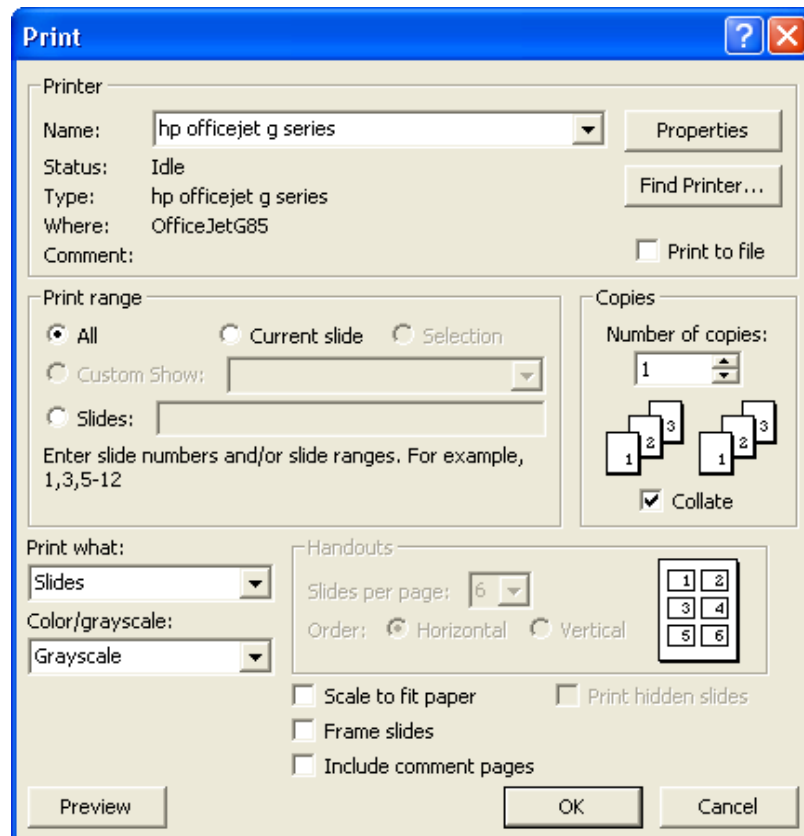
- **Scale to fit paper** Use this option to scale slides to fit the paper size in the printer if the paper in the printer does not correspond to the slide size and orientation settings.

- **Frame slides** Use this option to add a frame around the presentation slides when you print.
- **Include comment pages** Use this option to print any comments that you have inserted throughout the presentation.
- **Print hidden slides** Use this option to print all hidden slides. You will learn about hidden slides in Lesson 7, “Producing a Slide Show.”

If you are satisfied with the current Print dialog box settings, you can click the Print button on the Standard toolbar to print directly without first viewing the settings. Otherwise, click the Print command on the File menu to print with new settings.

In this exercise, you review print output types and options. You then print presentation slides, audience handouts, and speaker notes.

- 1 On the File menu, click Print (if the Print dialog is not already displayed).
The Print dialog box appears.



- 2 In the Print range area, click the Current slide option.
- 3 Click the Print what down arrow, and then click Slides.
- 4 Click the Color/Grayscale down arrow, click Grayscale, and then click OK.

PowerPoint prints the current slide in the presentation. A small print icon appears on the status bar, showing the printing status.

tip

Every printer prints text and graphics slightly differently. PowerPoint sizes presentation slides to the printer you choose. Using scalable fonts, such as TrueType fonts, PowerPoint allows you to print a presentation on different printers with the same great results. When you print a presentation with scalable fonts, PowerPoint reduces or enlarges the size of the text in the presentation for each printer to get consistent results.

You can print audience handouts in six formats: one, two, three, four, six, or nine slides per page.

- 5 On the File menu, click Print.
The Print dialog box appears.
- 6 Click the Print what down arrow, and then click Handouts.
- 7 Click the Slides per page down arrow, and then click 2.
Notice that PowerPoint selects the Frame slides check box when you select handouts.
- 8 Click OK.
PowerPoint prints the presentation slides as handout pages.
- 9 On the File menu, click Print.
The Print dialog box appears.
- 10 Click the Print what down arrow, and then click Notes Pages.
- 11 In the Print range area, click the Slides option.
The insertion point appears in the range box next to the Slides option.
- 12 Type **1-3, 5**.
PowerPoint will print notes pages 1 through 3 and 5.
- 13 Click OK.
PowerPoint prints notes pages 1, 2, 3, and 5.

You can print notes pages or slides in any order by entering slide numbers and ranges separated by commas.

tip

You can save a slide as a picture to use in other programs. Display or select the slide that you want to save, and then click Save As on the File menu. In the Save As Type box, click Windows Metafile, and then click the Save button. Now you can insert the slide as you would any picture.

Lesson Wrap-Up

This lesson covered how to open an existing presentation, add a header and a footer, preview slides, and print a presentation.

If you are continuing to the next lesson:

- 1 On the Standard toolbar, click the Save button.
PowerPoint saves any changes to the presentation.
- 2 On the File menu, click Close.
PowerPoint closes the presentation.

If you are not continuing to other lessons:

- 1 On the Standard toolbar, click the Save button.
PowerPoint saves any changes to the presentation.
- 2 Click the Close button in the top-right corner of the PowerPoint window.
PowerPoint closes the presentation, and then exits.

Quick Quiz

- 1 How do you change to Pure Black and White view?
- 2 What are four options you can specify in a header or a footer?
- 3 What are the output types from which you can print a presentation?
- 4 How do you print audience handouts with four slides per page?
- 5 How can you preview a presentation outline before printing?

Putting It All Together

Exercise 1: Open the presentation Contoso Recruiting Pres 03 in the Lesson03 folder that is located in the Presentation Fundamentals Practice folder, and then print two slides per page without a frame.

Exercise 2: Open the presentation Contoso Recruiting Pres 03 in the Lesson03 folder that is located in the Presentation Fundamentals Practice folder, and then print audience handouts using six grayscale slides per page in vertical order.

Exercise 3: Open the Holidays presentation you created in Exercise 3 for Lesson 2. Add a footer to all slides that displays the date (choose the date option that updates automatically), the slide number, and the footer text **A. Datum Corporation**. For notes and handouts pages, add a header that includes the date (update automatically) and the text **Holidays and Personal Time**, and a footer with the text **A. Datum Corporation**.

Exercise 4: Open the Holidays presentation and display the presentation in Print Preview. Change to Outline view. Magnify the view to see the header and footer text on the page. Print the presentation as an outline.

Exercise 5: Open the Vacation presentation you created for Exercise 4 in Lesson 2. Display the slides in Normal view in Pure Black and White. Change the view to Grayscale. Print Notes Pages in grayscale, with a frame around the pages.